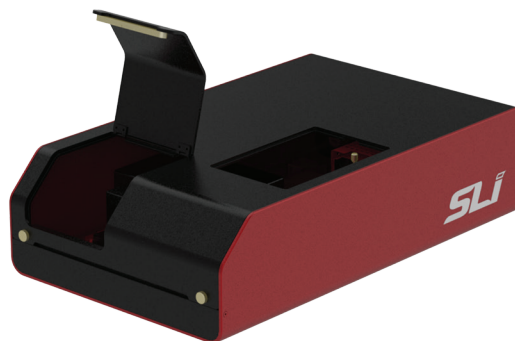


Fluorometer

The FWS Fluorometer is a fast, state-of-the-art fluorometer for wide range of applications. The FWS Fluorometer integrates our tungsten halogen lamp, Mighty Light, together with our Flexible Wavelength Selector to provide a high power, tunable monochromatic beam for excitation. The detection part uses a high signal-to-noise CCD for fast, sensitive detection of fluorescence. Click [here](#) for more information.



Specifications

Item Number	SP-FL-245	SP-FL-642	SP-FL-303
Dimensions / Weight	350x550x160 mm , ~ 20 kg		
Acquisition modes	Excitation and emission		
Type of lamp	Tungsten-Halogen		
Type of Detector	High Speed CCD	Back-Thinned CCD	TE Cooled Back-Thinned CCD
Excitation range	350 nm to 900 nm (depending on the FWS model) Min. FWHM: ~ 8-10 nm		
Detection range	200-1050 nm		
Pixel well depth, e-	62,500	200,000	300,000 (V) 600,000 (H)
Electric requirement	100-240 V AC, 50-60 Hz		