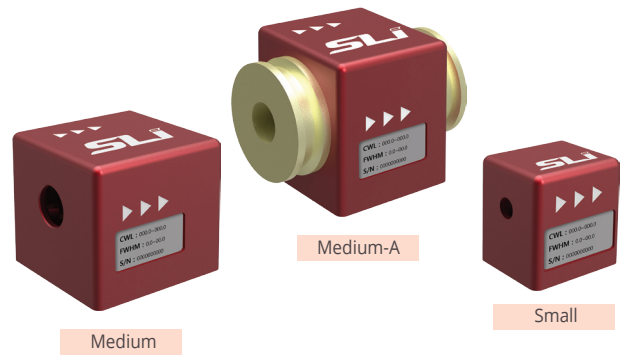


Custom Wavelength Selector – CenterLine

The Custom Wavelength Selectors are simple, rugged, optomechanical devices that are factory set to your exact specifications without the usual time and cost associated with obtaining custom bandpass filter performance. These Custom Wavelength Selectors are ideal for any imaging, microscopy, or illumination application that can benefit from bandpass performance which is optimally shaped. Click [here](#) for videos and more information.

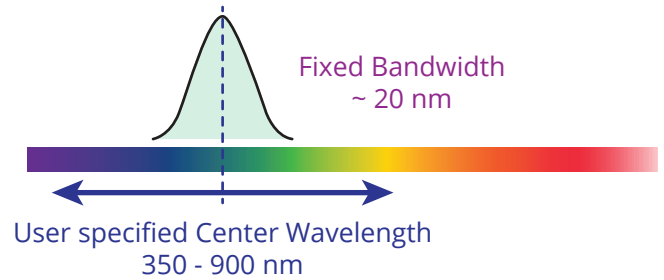
/ Optical Specifications

- Transmission: > 75%
- Wavelength Range: 350 ~ 900 nm
- FWHM: ~ 20 nm
- Extinction Coefficient: $OD_{avg} > 6$ (275 nm – 925 nm)
- Cut-on Transition Width: 2% – 3% (from blocking to transmission)
- Cut-off Transition Width: 2% – 3% (from transmission to blocking)



/ General Specifications

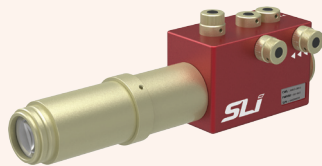
- Dimensions: 36 mm x 37 mm x 34 mm (Medium)
- 38 mm x 32 mm x 38 mm (Medium-A)
- 22 mm x 25 mm x 26 mm (Small)
- Aperture Size : up to 10 mm (Medium)
- up to 5 mm (Small)



Applications



CWS Mighty Light Beam Assembly



CWS Collimation Adapter Assembly



CWS Magnetic Base



CWS CCD Assembly