

Mighty Light

A compact source of low-noise white light with versatile output modules

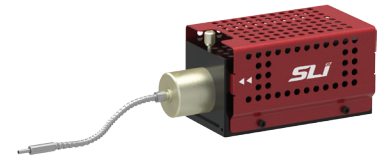
The Mighty Light is a compact white light source that is ideal for microscopy, spectroscopy, machine vision, and spectral imaging applications. The Mighty Light integrates a tungsten halogen bulb and power supply with a control board that delivers uniquely low-noise output. A series of pre-aligned bolt-on accessories allow the broadband output to be coupled into a fiber or light guide, homogenized and collimated, directly coupled into a microscope, or integrated with our unique Wavelength Selector devices to create a tunable, monochromatic beam. Click [here](#) for videos and more information.



Mighty Light
ML



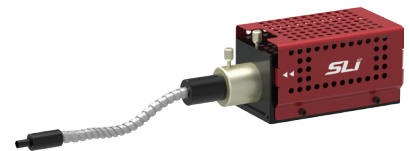
Collimator
ML-CA



Fiber Adapter
ML-FA



ML-Wavelength Selector



Light Guide Adapter
ML-LGA

Mighty Light Advantages

- Compact footprint (125 mm x 75 mm x 70 mm)
- Over 2 watts of output
- Low noise ($\pm 0.5\%$) output
- Broad continuous spectrum from 350 nm to 2.5 μm
- Color temperature ~ 2900 K
- Bolt-on options – no alignment required

Modular Output Accessories

- Collimator and diffusing module
- SMA fiber connector
- Fiber bundle light guide
- Full range of Wavelength Selectors
- Microscope adapter