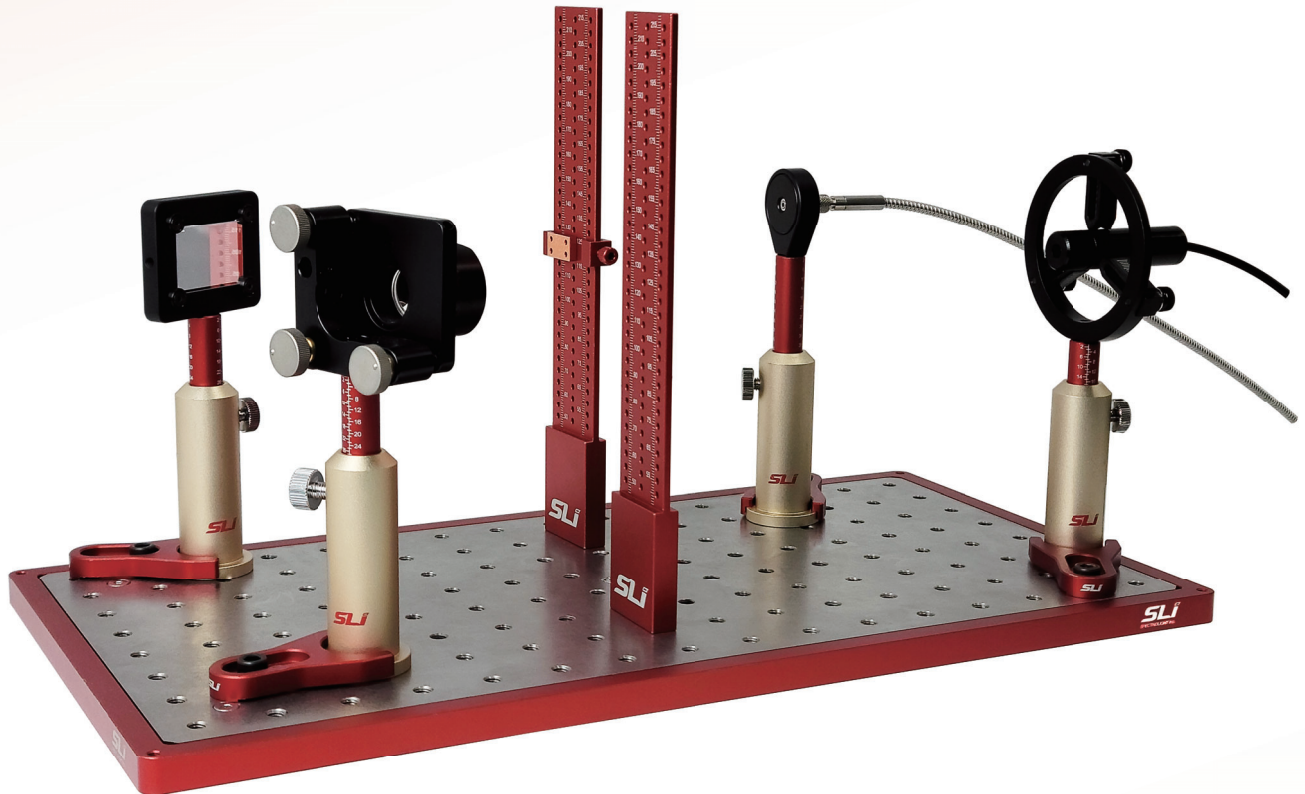


OPTICAL COMPONENTS



- Easy and Minute Light Alignment
- Precision Engraved Fiducials
- Lightweight and High Quality Stainless Board

Optomechanics - Light Aligner (LA)

Compatible for both Metric and Imperial (inch) versions

The Light Aligner (LA) is an anodized metal ruler that can be temporarily and accurately placed on any optical table, breadboard, or metal surface. LA solves the common problem of the alignment of laser or light beams in an optomechanical system on a breadboard or optical table. This brings complete freedom in its placement or precise beam alignment regardless of the mounting hole pattern on a table or breadboard. Optional extensions double the maximum height. The IR Slider accessory enables alignment of the IR beam which is otherwise invisible to the naked eye.

Specifications

Type	Item Number	Detail
Basic	LA-I8-B	Imperial Aligner Basic, 8.6 inches, Two poles
	LA-M220-B	Metric Aligner Basic, 220 mm, Two poles
Center	LA-I8-C	Imperial Aligner Center, 8.6 inches, Center pole
	LA-M220-C	Metric Aligner Center, 220 mm, Center pole
Free	LA-I8-F	Imperial Aligner Free standing, 8.6 inches, No poles
	LA-M220-F	Metric Aligner Free standing, 220 mm, No poles
Extender	LA-I8-E	Imperial Aligner Extender, 7.5 inches
	LA-M220-E	Metric Aligner Extender, 193 mm
Slider	LA-IR-C	Bolt-on accessory for IR detection, 18 mm x 10 mm

Features



Basic

Centers between rows of holes



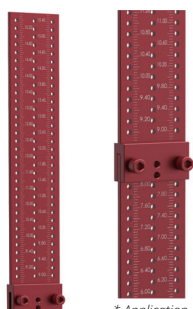
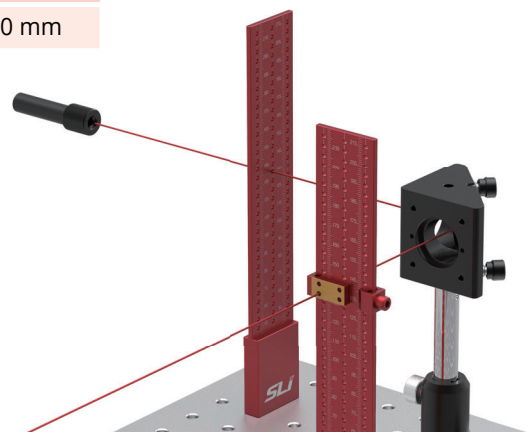
Center

Centers over row of holes



Free Standing

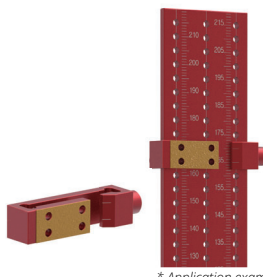
Positions anywhere



* Application example

Extender

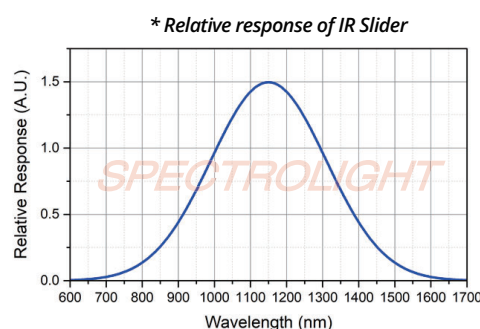
Extends length of Light Aligner



* Application example

IR Slider

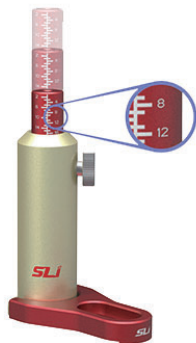
Aligns infrared ray



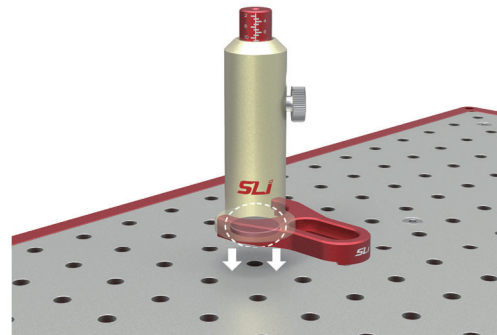
Optomechanics – Ruler Post

The Ruler Post is a simple solution to the frequent challenge of setting post mounted optics to a fixed/ common height above an optical table or breadboard. A clever locking clamp and magnetic base allows the Ruler Post to be securely located anywhere on the table surface.

Features



Precision engraved fiducials

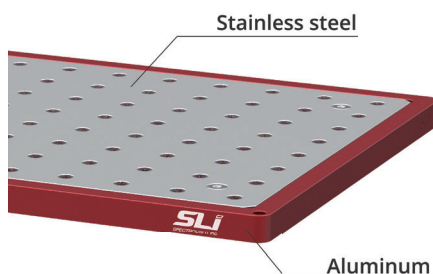


Magnetic base / Fork clamp

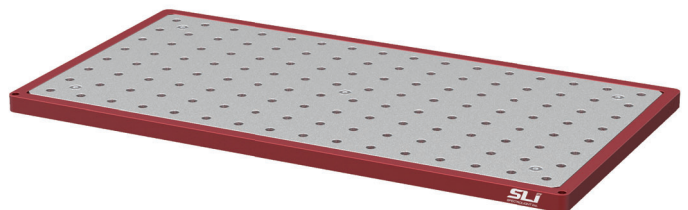
Optomechanics – Hybrid Board

The Hybrid Board is a thin, lightweight breadboard. Due to the aluminum base, it is suitable for optical assemblies, small sub-systems, and small optical experiments. The main work space is made of high quality stainless steel, allowing stable and precise application through magnetic accessories.

Features



High quality stainless steel for magnetic appliances



Light-weight aluminum base

Optomechanics – Fibers

Our multimode fibers are durable and high-quality patch cords that consistently deliver uniform results with minimal signal and energy variance. These products offer a wide range of fiber-optic cables, which can be made in a variety of lengths and configurations to meet users' needs.

Features



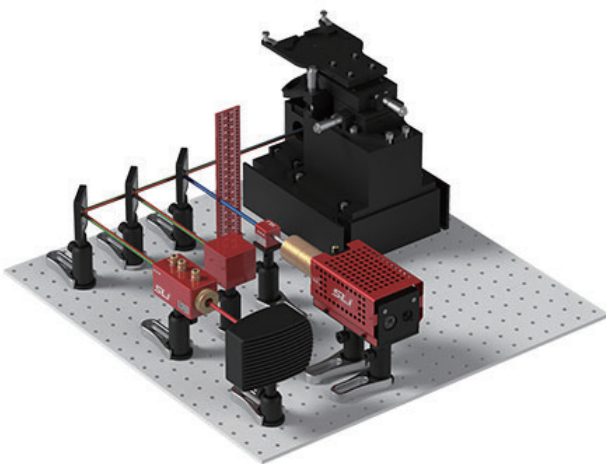
Durable and high-quality patch cords



SMA type connectors

Optomechanics Application

Modular optical microscopes



Infrared-ray light beam alignment

