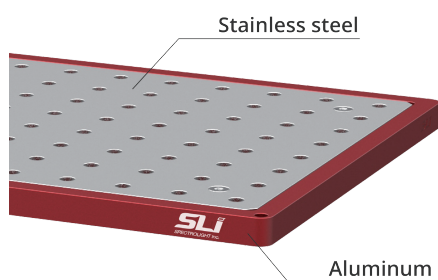


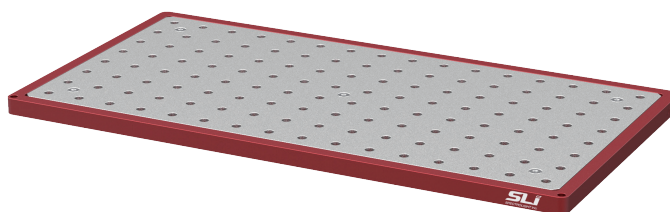
Optomechanics – Hybrid Board

The Hybrid Board is a thin, lightweight breadboard. Due to the aluminum base, it is suitable for optical assemblies, small sub-systems, and small optical experiments. The main work space is made of high quality stainless steel, allowing stable and precise application through magnetic accessories.

Features



High quality stainless steel for magnetic appliances



Light-weight aluminum base