

## Flexible Wavelength Selector – CenterLine

The Flexible Wavelength Selector utilizes TwinFilm™ technology to deliver the wavelength tuning and adjustable bandwidth of a grating monochromator together with the imaging advantages of a circular aperture filter. The CenterLine format of FWS features one knurled knob–for adjusting the center wavelength with a fixed bandwidth of around 16 nm. Click [here](#) for videos and more information

### / Optical Specifications

Transmission: > 75%

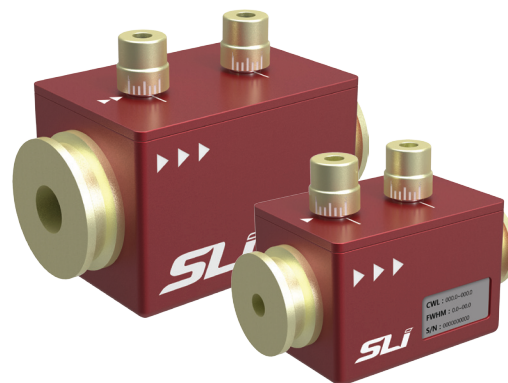
Wavelength Tuning Range: ~100 nm

FWHM: 2 nm ~ 16 nm

Extinction Coefficient:  $OD_{avg} > 6$  (275 nm – 925 nm)

Cut-on Transition Width: 2% – 3% (from blocking to transmission)

Cut-off Transition Width: 2% – 3% (from transmission to blocking)



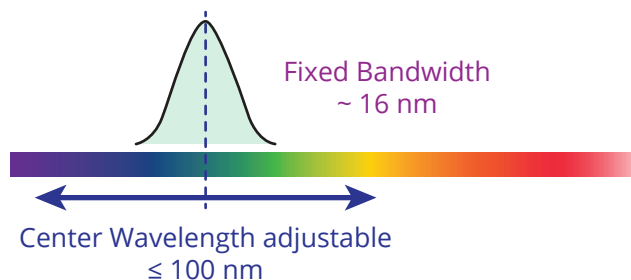
### / General Specifications

Dimensions: 40 mm x 58 mm x 40 mm (Medium)

32 mm x 46 mm x 32 mm (Small)

Aperture Size : up to 10 mm (Medium)

up to 5 mm (Small)



Medium Flexible Wavelength Selectors - CenterLine

Spectral Range <sup>1</sup>	Item Number
358 - 400 nm	FWS-CL-M-380
397 - 449 nm	FWS-CL-M-425
448 - 503 nm	FWS-CL-M-475
499 - 563 nm	FWS-CL-M-530
558 - 630 nm	FWS-CL-M-595
625 - 709 nm	FWS-CL-M-665
699 - 794 nm	FWS-CL-M-745
790 - 900 nm	FWS-CL-M-845

<sup>1</sup>Based on maximum bandwidth.  
Change in bandwidth may impact the spectral range .

Small Flexible Wavelength Selectors - CenterLine

Spectral Range <sup>1</sup>	Item Number
358 - 400 nm	FWS-CL-S-380
395 - 447 nm	FWS-CL-S-425
447 - 501 nm	FWS-CL-S-475
496 - 561 nm	FWS-CL-S-530
555 - 628 nm	FWS-CL-S-595
621 - 703 nm	FWS-CL-S-665
700 - 790 nm	FWS-CL-S-745
784 - 900 nm	FWS-CL-S-845

<sup>1</sup>Based on maximum bandwidth.  
Change in bandwidth may impact the spectral range .

\*Note : For the optimal performance of Wavelength Selectors, the incident light should be collimated.

All specifications are subject to change without prior notice