



[Wavelength Selector](#) | [Light Source](#) | [Optical Components](#) | [Systems](#)

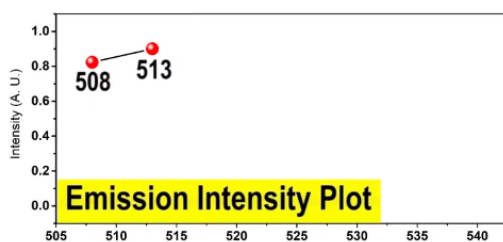
New Video! Application Note: Flexible Wavelength Selector (FWS) Poly for Hyperspectral Imaging

This video shows the application of our optical tunable filters, Flexible Wavelength Selector Poly, assembled at the emission port of a commercial microscope in a setup used for hyperspectral imaging.

[View Details](#)

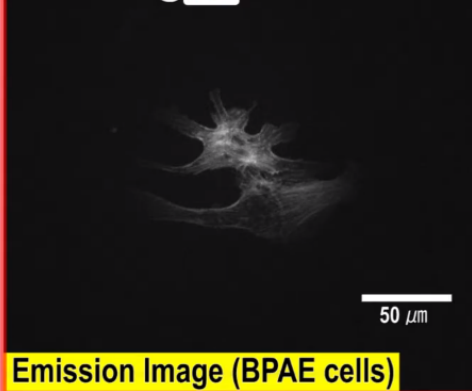


Emission Wavelength Scan



Emission Intensity Plot

Excitation @ 488 nm / 10 nm
Emission @ 513 nm / 15 nm



Emission Image (BPAE cells)

[See All Products](#)

Wavelength Selector

A truly revolutionary tool for spectroscopy and

spectral imaging.

[View Details](#)



Light Sources

Spectrolight offers a growing selection of unique light sources and related accessories

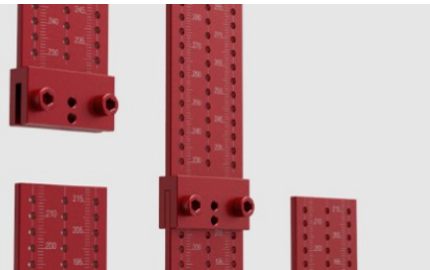
[View Details](#)



Optical Components

Spectrolight provides a growing range of optomechanical components

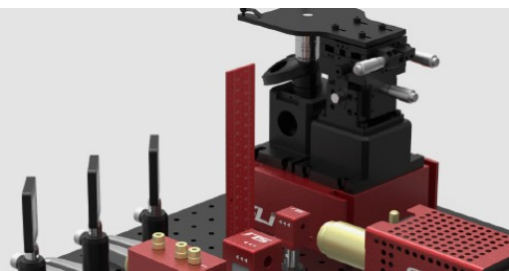
[View Details](#)



Systems

Spectrolight provides a growing range of innovative systems and related accessories

[View Details](#)



For Sales and Marketing Inquiries

sales@spectrolightinc.com
949-800-7780

For Applications and Technical Inquiries

Jun Hee Kang, Ph. D.
Application Scientist

Email: jkang@spectrolightinc.com
Mobile: 949-800-5117



Copyright © 2018 Spectrolight Inc., All rights reserved.

Our mailing address is:

info@spectrolightinc.com

Want to change how you receive these emails?

You can [update your preferences](#) or [unsubscribe from this list](#).