

Application Note:

Comparison of Flexible Wavelength Selector with other tunable filters

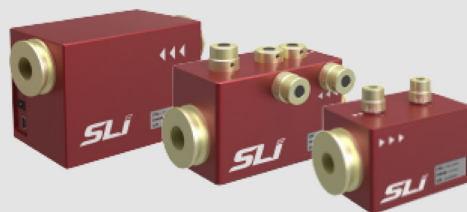
[View Details](#)

Tunable Filter	Advantages	Disadvantages
Liquid Crystal Tunable Filter	<ul style="list-style-type: none"> Wide wavelength tuning range 	<ul style="list-style-type: none"> Poor transmission Poor edge steepness Poor out of band blocking Low laser damage threshold Polarization dependent
Acousto Optic Tunable Filter	<ul style="list-style-type: none"> Wide wavelength tuning range High tuning speed 	<ul style="list-style-type: none"> Poor compatibility for imaging Poor edge steepness Poor out of band blocking Lack of adjustable bandwidth Polarization dependent
Linear Variable Tunable Filter	<ul style="list-style-type: none"> High transmission High laser damage threshold Polarization insensitive 	<ul style="list-style-type: none"> Poor edge steepness Slow tuning speed
TwinFilm™ Technology Flexible Wavelength Selector	<ul style="list-style-type: none"> High transmission Steep spectral edge High out of band blocking Simultaneously tune center wavelength and bandwidth Circular aperture ideal for imaging 	<ul style="list-style-type: none"> Limited wavelength tuning range (Upgraded product with broadband tuning range coming soon)

Flexible Wavelength Selector

A truly revolutionary tool for spectroscopy and spectral imaging.

[View Details](#)



We currently offer the FWS in four distinct formats:

- FWS-Auto models feature complete software control of wavelength and bandwidth via a USB link and simple software interface.
- FWS-Basic models provide manual control of wavelength and bandwidth via knurled knobs.
- FWS-CenterLine models provide manual control of wavelength with a factory pre-set bandwidth (~17 nm FWHM).
- FWS-High Resolution models provide manual control of wavelength and bandwidth using multi-rotation precision dials.

New Product Announcement!

Join us at SPIE BIOS Expo (Booth

SPIE. PHOTONICS
WEST
BIOS

#8246) in February for the unveiling
of our new product!

See All Products

See All Monthly Newsletters

Wavelength Selector

A truly revolutionary tool for spectroscopy and spectral imaging.

[View Details](#)



Light Sources

Spectrolight offers a growing selection of unique light sources and related accessories

[View Details](#)



Optical Components

Spectrolight provides a growing range of optomechanical components

[View Details](#)



Systems

Spectrolight provides a growing range of innovative systems and related accessories

[View Details](#)



For Sales and Marketing Inquiries

sales@spectrolightinc.com
949-800-7780

For Applications and Technical Inquiries

Jun Hee Kang, Ph. D.
Application Scientist

Email: jkang@spectrolightinc.com
Mobile: 949-800-5117



Copyright © 2018 Spectrolight Inc., All rights reserved.

Our mailing address is:
info@spectrolightinc.com

Want to change how you receive these emails?
You can [update your preferences](#) or [unsubscribe from this list](#).