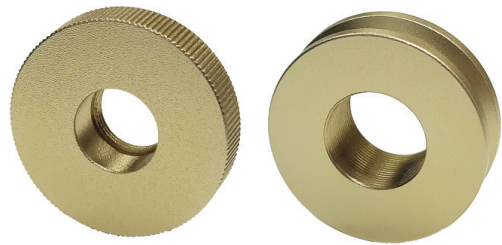


Wavelength Selector Accessories

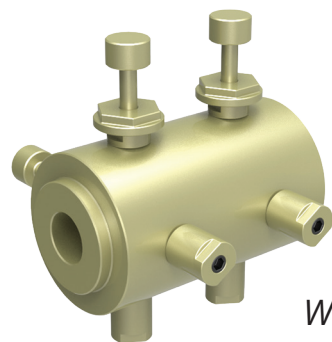
Input Accessories



WS-FA-11P
WS-FA-05P

Fiber collimator adapter

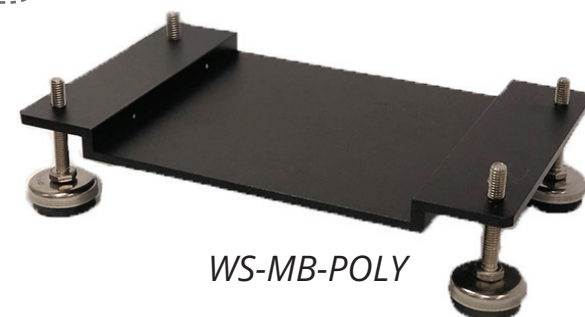
To connect wavelength selectors with fiber collimators [Φ 11 mm, SM05]



WS-SCA

Supercontinuum source adapter

To connect supercontinuum sources to wavelength selectors

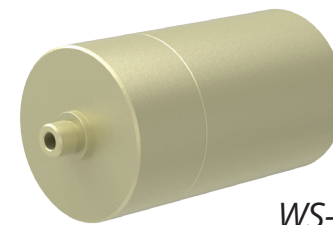


WS-MB-POLY

Mounting Base

Magnetic baseplate includes an M4 center hole for simple plug & play post mounting of wavelength selectors

Output Accessories



WS-FA-SMA

SMA type fiber adapter

To connect the output of wavelength selectors directly to an SMA type



WS-FA-LGA

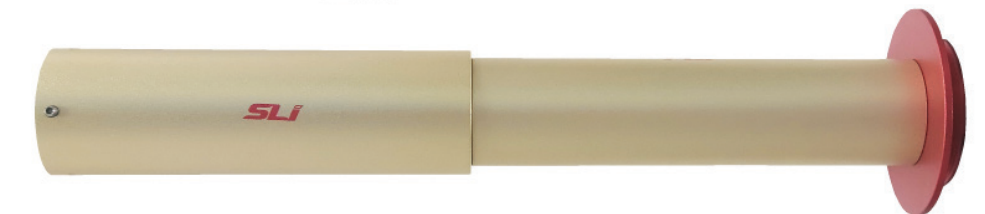
Light guide adapter

To connect the output of wavelength selectors directly to light guide [3 mm, 5 mm]

Extender for Detection



4f Relay Extender



Extender accessory between a microscope and wavelength selectors and camera for imaging.

Application Idea

Allowing easy connection of FWS with commercial microscope

