

## Mighty Light

***A compact source of low-noise white light with versatile output modules***

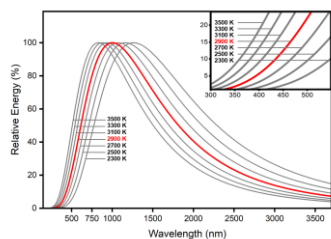
ML-TH integrates a Tungsten Halogen bulb and power supply with a control board that delivers uniquely low-noise output. By applying a series of pre-aligned bolt-on accessories, ML-TH can be directly coupled into a microscope and fiber bundle with its light beam homogenized and collimated. ML-TH can also be integrated with our unique Wavelength Selector devices to create a tunable monochromatic beam.

### / Specifications

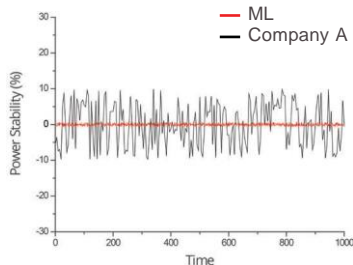
- Type of Lamp: Tungsten-Halogen
- Lamp Power Output: ~ 2 W
- Power Stability:  $\pm 0.5\%$
- Bulb Lifetime: ~ 1,000 hours
- Color Temperature : 2,900 K
- Dimensions: 125 mm x 75 mm x 70 mm
- Electric Requirement : 100 - 240 V AC, 50-60 Hz
- Power Supply : 9 V DC at 2 A



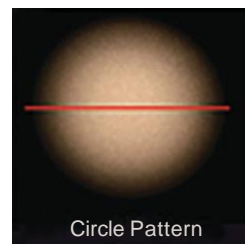
### / Features



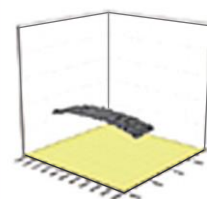
Broad continuous spectrum



Low noise output : ( $\pm 0.5\%$ )



Circle Pattern



Line Pattern

Uniform intensity when collimated

Collimated Light



Collimated



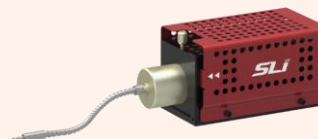
Collimated(Magnified)

Free space



Collimator Adaptor

Fiber coupling type



Fiber Adaptor